

REF. NO:

REVISION					
C.O.N	SYM	DESCRIPTION	DATE	DRAWN	APPR'D

GENERAL:

MODEL LP-10FB IS A 10 mm STROKE CONDUCTIVE PLASTIC, LINEAR MOTION POTENTIOMETER, WITH A RETURN SPRING. ITS CO-MOLDED ELEMENT, UNIQUE DESIGN AND PRECISION CONSTRUCTION ALLOW THE UNIT TO FEATURE SUPERB OUTPUT SMOOTHNESS AND LONG OPERATING LIFE.

ELECTRICAL SPECIFICATIONS:

ELECTRICAL STROKE:	10 mm (F.S.)
TOTAL RESISTANCE:	0.1, 0.2, 0.5, 1, 2 KOHMS
TOTAL RESIS. TOLERANCE:	±20%
LINEARITY (INDEPENDENT):	±1%
REPEATABILITY:	0.03%
POWER RATING:	0.3 WATTS @70°C
INSULATION RESISTANCE:	500 meg OHMS MIN. @ 500 Vdc
DIELECTRIC STRENGTH:	500 Vrms,50/60Hz,for 1 MINUTE
RESISTANCE TEMP. COEFFECIENT:	400 ppm/°C

MECHANICAL STROKE:

MECHANICAL STROKE:	12 mm
FRICTION (SPRING FORCE):	120 gf
WEIGHT:	APPROX. 60 g

ENVIRONMENTAL SPECIFICATIONS:

OPERATING TEMPERATURE:	-40°C to +100°C
VIBRATION:	10 Gs, 500 Hz
SHOCK:	50 Gs, 11 ms
LIFE:	5 MILLION CYCLES MIN.

MOUNTING HOLES: REFER TO FIGURE 1

STANDARD HOLE LOCATION IS ON THE SURFACE "A".
 OPTIONAL MOUNTING HOLE LOCATION IS AVAILABLE ON SURFACES, "B", "C" and "D", AS SHOWN.

UNLESS OTHERWISE SPECIFIED, DIMENSIONS ARE IN mm(in).
 TOLERANCES:
 ANGLES: ±1.5°
 ≤10 mm: ±0.25
 <100 mm: ±0.5
 ≥100 mm: ±1

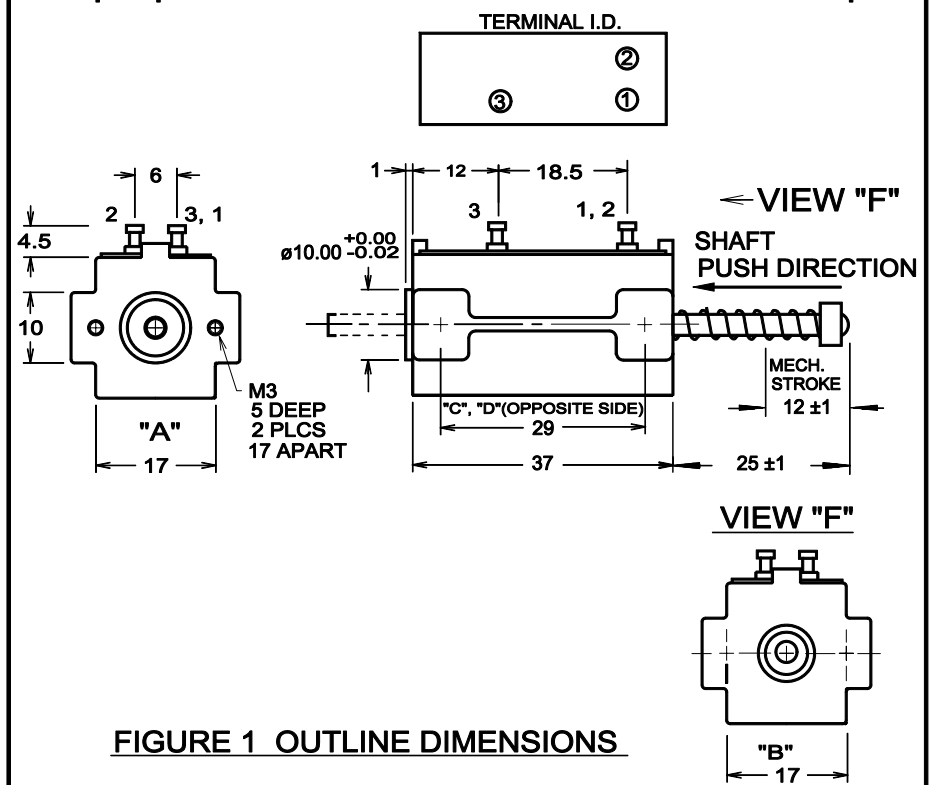


FIGURE 1 OUTLINE DIMENSIONS

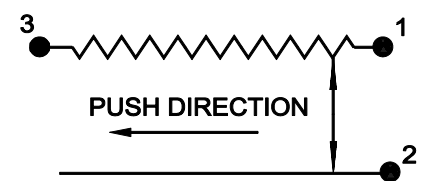


FIGURE 2 SCHEMATIC

DRAWN T.TSUGAWA CHECKED APPROVED APPROVED SCALE:	DATE 12/16/94	SPECIFICATION DWG FOR MODEL LP-10FB LINEAR MOTION POT. (WITH RETURN SPRING) FILE: LP-10FB	Midori America Corporation FULLERTON, CA
	DATE		
	DATE		A-MAC-B57
	DATE		
SCALE:	FILE: LP-10FB	1 OF 1	