

REF. NO:

REVISION

GENERAL:

MODEL LP-10F IS A 10 mm STROKE CONDUCTIVE PLASTIC, LINEAR MOTION POTENTIOMETER OF WHICH PERFORMANCE IS UNAFFECTED BY SHAFT ROTATION. ITS CO-MOLDED ELEMENT AND PRECISION CONSTRUCTION PERMIT THE UNIT TO FEATURE LOW TORQUE, SUPERB SMOOTHNESS AND LONG LIFE.

ELECTRICAL SPECIFICATIONS:

ELECTRICAL STROKE:	10 mm (F.S.)
TOTAL RESISTANCE:	0.1, 0.2, 0.5, 1, 2 KOHMS
TOTAL RESIS. TOLERANCE:	±20%
LINEARITY (INDEPENDENT):	±1%
REPEATABILITY:	±0.03%
POWER RATING:	0.3 WATTS @70°C
INSULATION RESISTANCE:	500 meg OHMS MIN. @ 500 Vdc
DIELECTRIC STRENGTH:	500 Vrms, 50/60Hz, for 1 MINUTE
RESISTANCE TEMP. COEFFICIENT:	400 ppm/°C

MECHANICAL STROKE:

MECHANICAL STROKE:	12 mm
FRICTION:	29 gf MAX.
WEIGHT:	APPROX. 60 g

ENVIRONMENTAL SPECIFICATIONS:

OPERATING TEMPERATURE:	-40°C to +100°C
VIBRATION:	10 Gs, 500 Hz
SHOCK :	50 Gs, 11 mS
LIFE:	5 MILLION CYCLES MIN.

MOUNTING HOLES: REFER TO FIGURE 1

STANDARD HOLE LOCATION IS ON THE SURFACE "A". OPTIONAL MOUNTING HOLE LOCATION IS AVAILABLE ON SURFACES, "B", "C" and "D", AS SHOWN.



GUEMISA

Sta. Virgilia 3-b ; 1ºF 28033 Madrid
Tfno.: 91 764 21 00 Fax.: 91 764 21 32
Email: info@guemisa.com

UNLESS OTHERWISE SPECIFIED, DIMENSIONS ARE IN mm(In).
TOLERANCES:
ANGLES: ±1.5°
≤10 mm: ±0.25
<100 mm: ±0.5
≥100 mm: ±1

C.O.N	SYM	DESCRIPTION	DATE	DRAWN	APPR'D

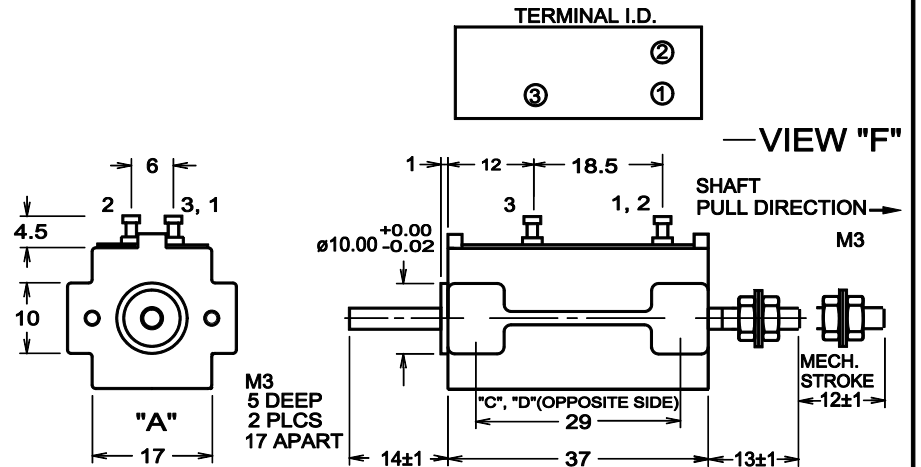


FIGURE 1 OUTLINE DIMENSIONS

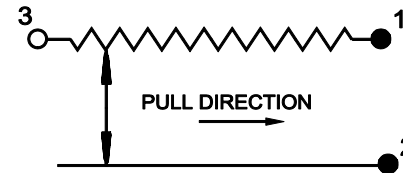


FIGURE 2 SCHEMATIC

DRAWN T.TSUGAWA	DATE 12/16/94	SPECIFICATION DWG FOR MODEL LP-10F LINEAR MOTION POTENTIOMETER	Midori America Corporation FULLERTON, CA
CHECKED	DATE		
APPROVED	DATE		A-MAC-B56
APPROVED	DATE		
SCALE:		FILE: LP-10F	1 OF 1