

REF. NO: MPCL CAT.P65

REVISION

C.O.N	SYM	DESCRIPTION	DATE	DRAWN	APPR'D
	A	M3, 4 DEEP HOLES ADDED.	5/25/94	T.TSUGAWA	
	B	1) WAS ±0.5%.	05/06/02	T.TSUGAWA	

GENERAL:

MODEL CPP-45B IS 45mm(1.77")O.D., 6mm(0.236")DIA. SHAFT
 PRECISION CONDUCTIVE PLASTIC POTENTIOMETER. ITS SUPERB
 QUALITY, RELIABILITY AND PERFORMANCE MAKE CPP-45B SUITABLE
 FOR PRECISION POSITION SENSING APPLICATIONS.

ELECTRICAL SPECIFICATIONS:

ELECTRICAL ANGLE: 350°
 TOTAL RESISTANCE: 1k, 2k, 5k, 10k and 20k OHMS
 TOTAL RESISTANCE TOLERANCE: ±15%
 LINEARITY (INDEPENDENT): $\pm 0.3\%$. (±0.1% AVAILABLE)
 REPEATABILITY: ± 0.003%
 POWER RATING: 3 WATTS @ 70 °C
 INSULATION RESISTANCE : 100 meg OHMS MIN. @ 1,000 Vdc
 DIELECTRIC STRENGTH: 1,000 Vrms @50/60 Hz for 1 MINUTE

MECHANICAL SPECIFICATIONS:

MECHANICAL ANGLE: 360°
 TORQUE: 18 g-cm (0.25 in-oz)
 WEIGHT: APPROX. 60 g (2.1 oz)
 LIFE: 10 MILLION CYCLES MIN.
 GANGING: UP TO 8 SECTIONS

ENVIRONMENTAL SPECIFICATIONS:

OPERATING TEMPERATURE: -40°C to +120°C
 VIBRATIONS: 15 Gs, 2,000 Hz
 SHOCK: 50Gs, 11 mS

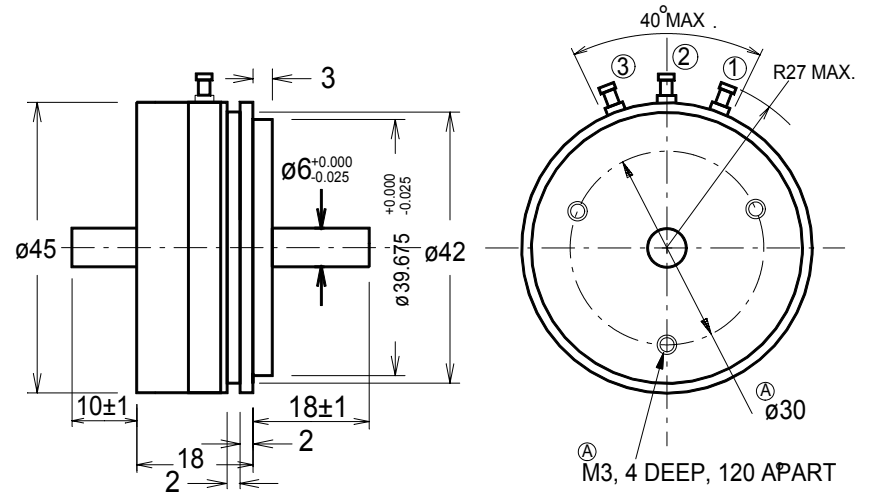


FIGURE 1 OUTLINE DIMENSION

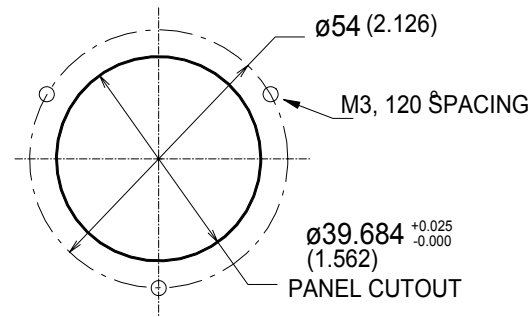


FIGURE 2 MOUNTING DIMENSION

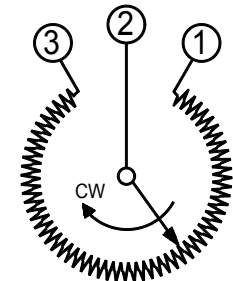


FIGURE 3 WIRING DIAGRAM



GUEMISA

Sta. Virgilia 3-b ; 1°F 28033 Madrid
 Tfno.: 91 764 21 00 Fax.: 91 764 21 32
 Email: info@guemisa.com

UNLESS OTHERWISE SPECIFIED, DIMENSIONS ARE IN mm(in).
 TOLERANCES:
 ANGLES ±1.5°
 <10 mm: ±0.25
 <100 mm: ±0.5
 >100 mm: ±1

DRAWN	T.TSUGAWA	DATE	2/16/94
CHECKED		DATE	
APPROVED		DATE	
APPROVED		DATE	
SCALE:			

SPECIFICATION DWG
 FOR
MODEL CPP-45B
POTENTIOMETER

FILE: CPP-45B

Midori America Corporation
 FULLERTON, CA

A-MAC-B43B