

10737

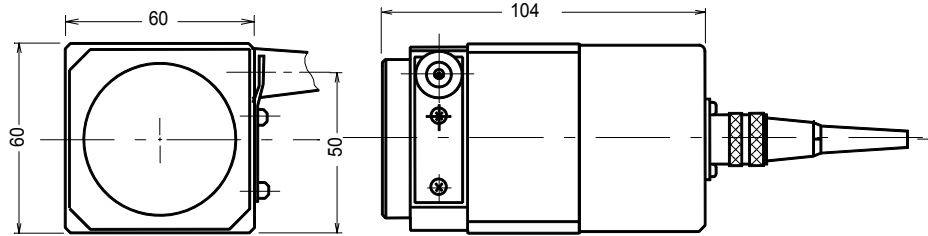


GUEMISA
 Sta. Virgilia 3-b ; 1ºF 28033 Madrid
 Tfno.: 91 764 21 00 Fax.: 91 764 21 32
 Email: info@guemisa.com

REVISION					
C.O.N	SYM	DESCRIPTION	DATE	DRAWN	APPR'D
	A	1) WAS ±0.5%.	05/06/02	T.TSUGAWA	

ELECTRICAL SPECIFICATIONS:

ELECTRICAL STROKE: SEE TABLE 1
 TOTAL RESISTANCE: 1K, 2K, 5K, 10K, 20K OHMS
 TOTAL RESIST. TOL: ±15%
 LINEARITY: ^(A) ±0.3%
 POWER RATING: 3 WATTS @70°C
 OUTPUT SMOOTHNESS: 0.1% MAX.
 INSULATION RESISTANCE: 100 MEG OHMS MIN. @1,000 Vdc
 DIELECTRIC STRENGTH: 1,000 Vrms,50/60 Hz FOR 1 MINUTE



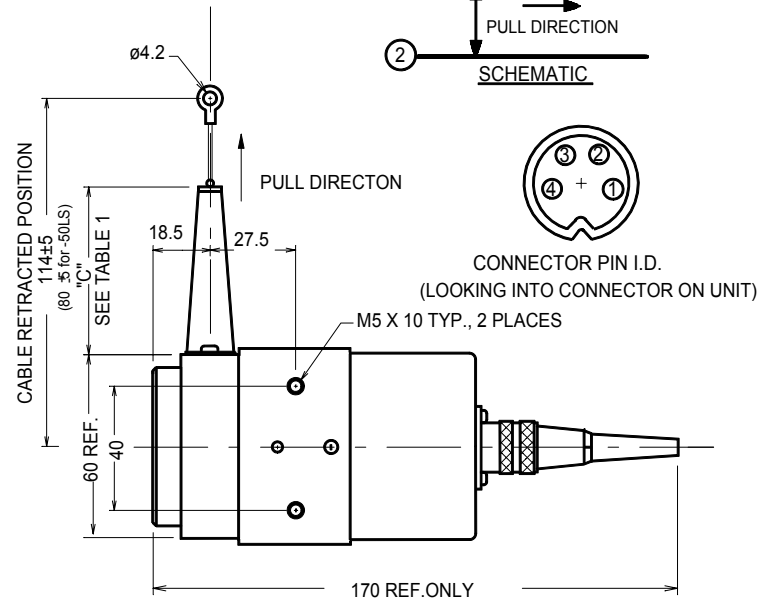
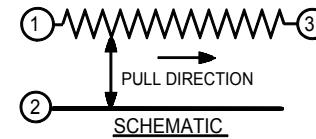
SHOW AS MATING CONNECTOR ATTACHED.

MECHANICAL SPECIFICATIONS:

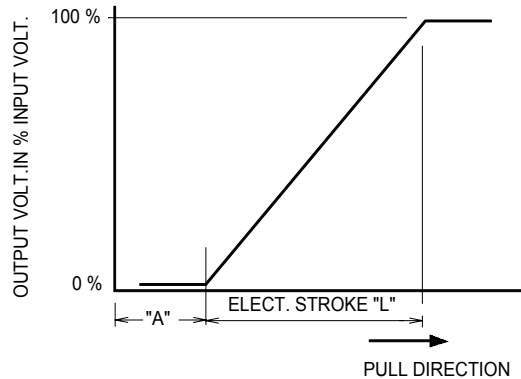
CABLE PULL FORCE: 800 grams (17.6 LB)
 MAX. CABLE SPEED: 1 meter/S. (40 INCHES/S.)
 WEIGHT: 650 grams (1.43 LB)

TABLE 1

	CPP45-50LS	CPP-45-150LS	CPP-45-200LS	CPP-45-280LS
IDLE STROKE "A"	100 ±0 mm (3.94 ±0.40")	140 ±0 mm (5.51 ±0.40")	140 ±0 mm (5.51 ±0.40")	140 ±0 mm (5.51 ±0.40")
ACTIVE STROKE "L"	610 ±0 mm (24.0 ±0.8")	1640 ±0 mm (64.6 ±0.8")	2235 ±0 mm (88.0 ±0.8")	2800 ±0 mm (110.2 ±0.8")
LENGTH "C"	20 mm (0.79")	54 mm (2.13")	54 mm (2.13")	54 mm (2.13")



OUTPUT CHARACTERISTICS



UNLESS OTHERWISE SPECIFIED, DIMENSIONS ARE IN mm (in). TOLERANCES: ANGLES ±1.5° <10 mm: ±0.25 <100 mm: ±0.5 >100 mm: ±1	DRAWN	DATE	SPECIFICATION DWG FOR MODEL CPP-45-xxxLS	Midori America Corporation FULLERTON, CA
	T. TSUGAWA	10/23/96		
	CHECKED	DATE	CABLE POTENTIOMETER	A-MAC-B43 A
	APPROVED	DATE		
	APPROVED	DATE	FILE: CPP-45-xxxLS	1 OF 1
SCALE:				