

10736

REF. NO: MPCL 93 CAT. P88

REVISION

C.O.N	SYM	DESCRIPTION	DATE	DRAWN	APPRD
	A	1) WAS ±0.5%.	05/06/02	T.TSUGAWA	

GENERAL:

MODEL CPP-45-xxSX IS A CONDUCTIVE PLASTIC POTENTIOMETER WITH A GEAR HEAD ASSEMBLY. A COMBINATION OF THE SUPERB PERFORMANCE CHARACTERISTICS OF CPP-45 SERIES POTENTIOMETER AND PRECISION ASSEMBLY OF ANTI-BACKLASH HELICAL GEAR AND TWO SETS OF BALL BEARINGS ALLOW THE UNIT TO BE A PRECISION, ULTRA RELIABLE MULTI TURN POTENTIOMETER.

ELECTRICAL CHARACTERISTICS:

ELECTRICAL ANGLE: 350°
 TOTAL RESISTANCE: 1k, 2k, 5k, 10k and 20k OHMS
 RESIST. TOLERANCE: ±15%
 LINEARITY (INDEPENDENT): ^A±0.3%. (±0.1% AVAILABLE)
 REPEATABILITY: ±0.03% (INCLUDING BACKLASH)
 POWER RATING: 3 WATTS @70°C
 INSULATION RESISTANCE: 100 meg OHMS MIN. @ 1,000 Vdc
 DIELECTRIC STRENGTH: 1,000 Vrms @50/60 Hz for 1 MINUTE

MECHANICAL SPECIFICATIONS:

GEAR (REDUCTION) RATIO:

MODEL CPP-45-10SX 10 : 1
 MODEL CPP-45-24SX 24 : 1
 MODEL CPP-45-35SX 35 : 1
 MODEL CPP-45-100SX 100 : 1

TORQUE: 40 gm-cm (0.56 in-oz) MAX.
 WEIGHT: APPROX. 220 gm (8 oz)
 LIFE: 10 MILLION CYCLES MIN.

ENVIRONMENTAL SPECIFICATIONS:

OPERATING TEMPERATURE: -40°C to +120°C
 VIBRATIONS: 15 Gs, 2,000 Hz
 SHOCK: 50Gs, 11 ms



GUEMISA
 Sta. Virgilia 3-b; 1ºF 28033 Madrid
 Tfno.: 91 764 21 00 Fax.: 91 764 21 32
 Email: info@guemisa.com

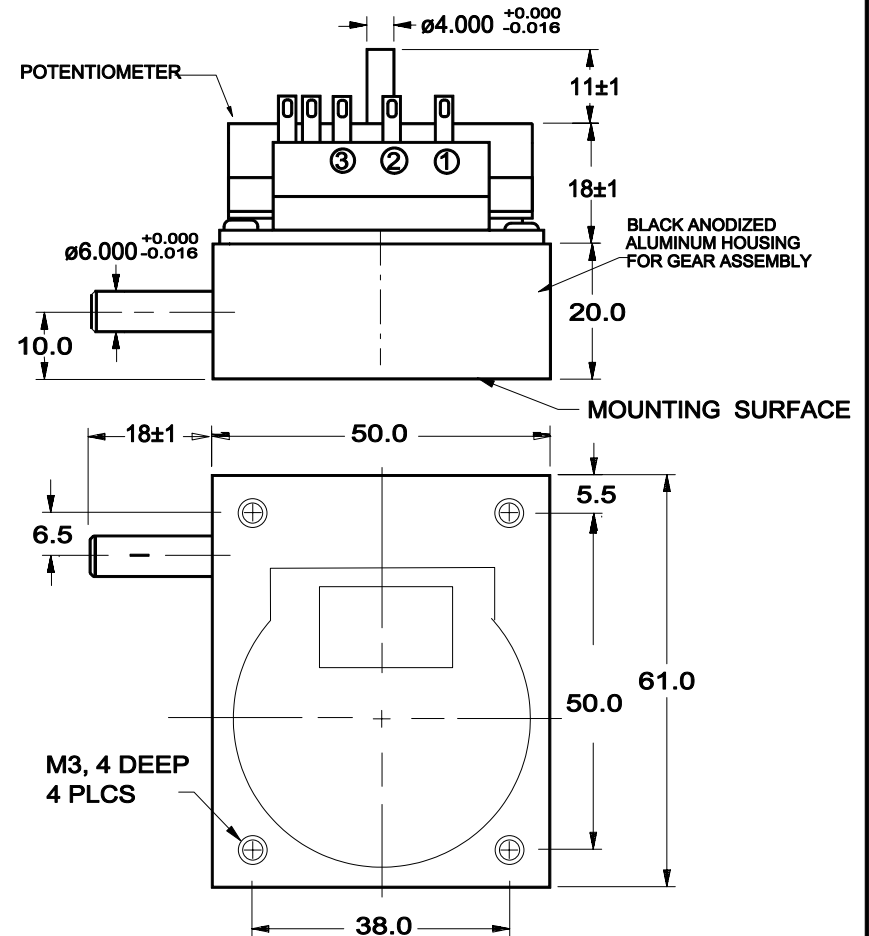


FIGURE 1 OUTLINE DIMENSION

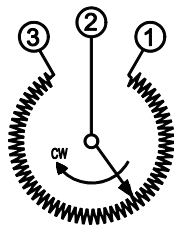


FIGURE 2 WIRING DIAGRAM

UNLESS OTHERWISE SPECIFIED, DIMENSIONS ARE IN mm(in). TOLERANCES: ANGLES: ±1.5° <10 mm: ±0.25 <100 mm: ±0.5 >100 mm: ±1	DRAWN	T.TSUGAWA	DATE	1/16/97	SPECIFICATION DWG FOR MODEL CPP-45-xxSX POTENTIOMETER (WITH GEAR HEAD)	Midori America Corporation FULLERTON, CA	A-MAC-B91	A
	CHECKED		DATE					
	APPROVED		DATE					
	APPROVED		DATE					
SCALE:	FILE: CPP-45-xxSX			1 OF 1				