

10734	REF. NO: MPCL CAT. P64	REVISION			
		C.O.N	SYM	DESCRIPTION	DATE

GENERAL:
 MODEL CPP-35B IS 36.5mm(1.44")O.D., 6mm(0.236")DIA. SHAFT
 PRECISION CONDUCTIVE PLASTIC POTENTIOMETER. ITS SUPERB
 QUALITY, RELIABILITY AND PERFORMANCE MAKE CPP-35B SUITABLE
 FOR PRECISION POSITION SENSING APPLICATIONS.

ELECTRICAL SPECIFICATIONS:

ELECTRICAL ANGLE: 340°
 TOTAL RESISTANCE: 0.5, 1, 2, 5, 10K OHMS
 TOTAL RESISTANCE TOLERANCE: ±20%
 LINEARITY (INDEPENDENT): ± 1% (±0.15% AVAILABLE)
 REPEATABILITY: 0.003%
 POWER RATING: 2 WATTS @70 °C
 INSULATION RESISTANCE : 100 meg OHMS MIN. @ 1,000 Vdc
 DIELECTRIC STRENGTH: 1,000 Vrms @50/60 Hz for 1 MINUTE

MECHANICAL SPECIFICATIONS:

MECHANICAL ANGLE: 360°
 TORQUE: 14 g-cm MAX. (0.2 oz-in MAX.)
 WEIGHT: APPROX. 40 g (1.4 oz)
 LIFE: 10 MILLION CYCLES MIN.
 GANGING: UP TO 6 SECTIONS

ENVIRONMENTAL SPECIFICATIONS:

OPERATING TEMPERATURE: -40°C to +120°C
 VIBRATIONS: 15 Gs, 2,000 Hz
 SHOCK: 50Gs, 11 ms

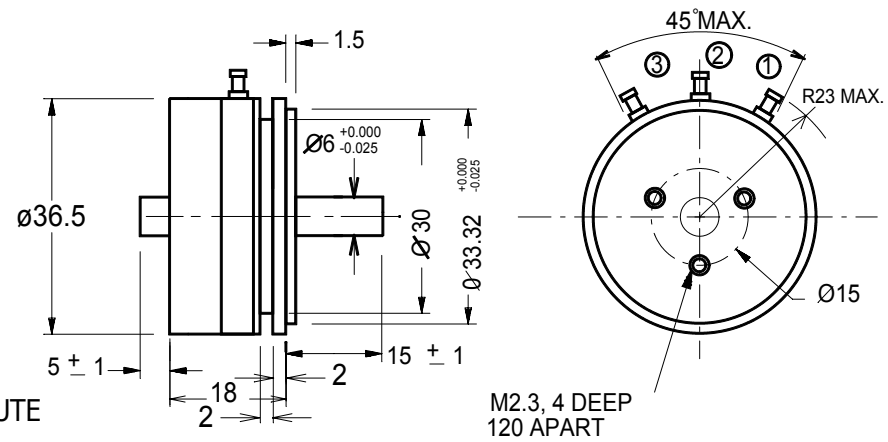


FIGURE 1 OUTLINE DIMENSION

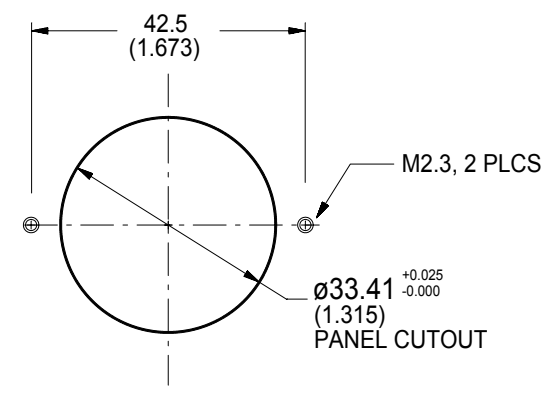


FIGURE 2 MOUNTING DIMENSION

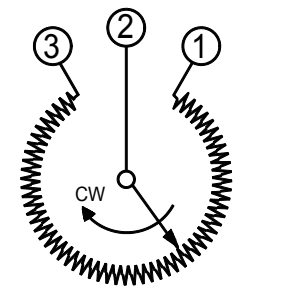


FIGURE 3 WIRING DIAGRAM



GUEMISA
 Sta. Virgilia 3-b ; 1ºF 28033 Madrid
 Tfno.: 91 764 21 00 Fax.: 91 764 21 32
 Email: info@guemisa.com

UNLESS OTHERWISE SPECIFIED, DIMENSIONS ARE IN mm(in). TOLERANCES: ANGLES ±1.5° <10 mm: ±0.25 <100 mm: ±0.5 >100 mm: ±1	DRAWN T. TSUGAWA	DATE 5/25/94	SPECIFICATION DWG FOR MODEL CPP-35B POTENTIOMETER	Midori America Corporation FULLERTON, CA A-MAC-B45
	CHECKED	DATE		
	APPROVED	DATE		
	APPROVED	DATE		
	SCALE:	FILE: CPP-35B		
			1 OF 1	