

Infrared - hand-held thermometer: -30 ... 900°C (-50 ... 500°C) (GIM 3090 - MX2 and GIM 3090 - MX4)

- Reliable measurements due to accurate laser circle sight hole, optimum handling and ease of operation
- Measurements from a safe distance due to high-performance optics.
- Low initial costs due to excellent price/quality ratio.



Sta. Virgilia 29 Local.1A 28033 Madrid
Tfno.: 91 764 21 00 Fax.: 91 764 21 32
www.guemisa.com Email: info@guemisa.com

Standard types: (in stock)

GIM 3090 - MX2

GIM 3090 - MX4

GIM 3090 - MX4/S

(incl. software, RS232 computer cable and case)

Options: (against upcharge, time of delivery)

CF close focus optik

(order name: e.g. GIM3090 - MX4CF)

SZ low temperature version

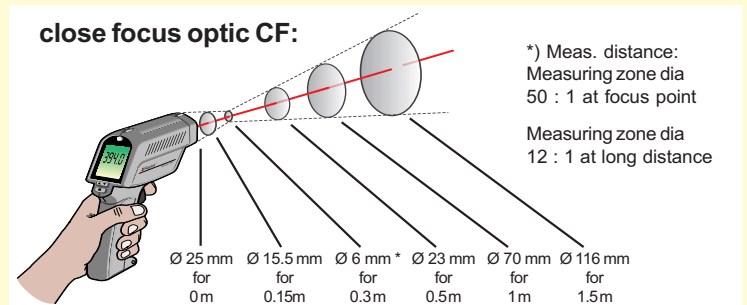
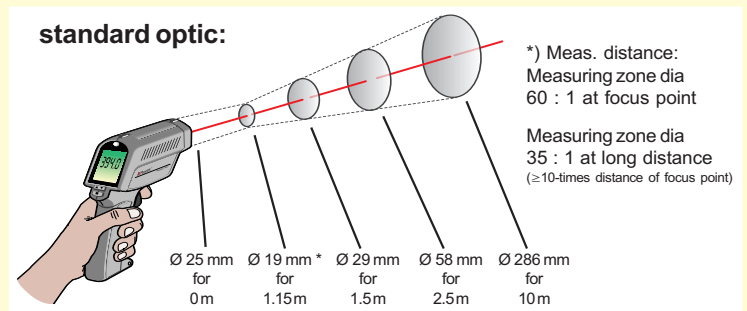
(-50 ... +500°C, order name: e.g. GIM3090 - MX4SZ)

Technical description:

The laser circle sight hole shows the actual measuring zone. The graphic display gives the trend of the last 10 measurements and the max. and min. temperatures determined during measuring. The MX4 is equipped with inputs for thermocouples (types K and J), external power supply, an internal memory for up to 100 meas. values as well as a digital output. In addition the MX4 memory includes a most useful table for emission rates, listing values for those 30 materials that are most commonly used. In connection with our software and a PC the MX4 is highly suitable for test and routine measuring.



Size of meas. zone and distance with regard to meas. object:



Specification:

Meas. range: -30,0 ... +900,0°C
(for "SZ": -50,0 ... +500,0°C)

Resolution: 0,1°C

Accuracy: ±1% of range or ±1°C
(-30...0°C = ±2°C)

Consistency: ±0.5% resp. ±1°C
(highest value shall be valid)

Response time: $t_{95} = 250\text{ms}$

Spectral sensitivity: 8 - 14 μm

Display: LCD, approx. 35 x 45 mm high, with background illumination

Working temperature: 0 to +50°C
(for laser mode: max. 45°C)

Relative humidity: 10 to +95 % r.h.
at 30°C (non-condensing)

Storage temperature: -20 to +50°C
(batteries not incl.)

Voltage supply: 2x1.5V, type R6 (AA), for MX4 additional d.c. input

Dimensions: 200 x 170 x 50 mm

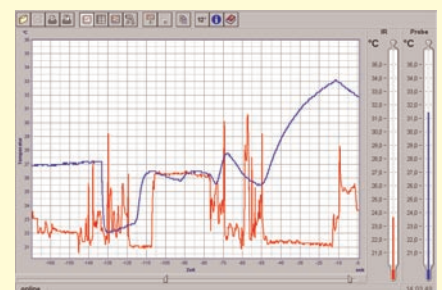
Weight: 480g

Equipment:

- Max and min value memory
 - HI-alarm: acoustic and visual
 - Laser circle sight hole (laser class 2)
 - Emission rate adjustable
 - Graphic display
- Additionally for MX4**
- Difference display
 - Average value (AVG)
 - Connection for thermocouples types K and J
 - LO-alarm: acoustic and visual
 - Table of materials (emission rates preset)
 - Internal data memory for 100 measuring values
 - Data exchange: RS232 or 1mV/°C

Options and accessories:

Software (compatible to windows)



GNG 09 - 7.5V
plug-in powerpack

Certificate of calibration
(Calibration points: 25, 100 and 200°C)

Certificate of calibration
(Calibration points: 25, 200 and 495°C)

Other calibration points upon request !

Temperature probe type K p.r.t.
pages 14, 15 and 90, 91