




Price List 2010 – EDS-C

EUR

DISTANCE MEASURING – contactless and reliable




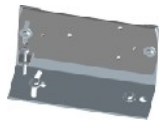
EDS-C – the simple and economic solution

Picture	Item No.	Product-ID	Description	Price / EUR
	550502	EDS-C 30	Laser Distance Sensor Measuring range: 0.05 ... 30m Accuracy: ±3mm Interface: 1 Analog output 0/4 ... 20 mA Operating temperature: -10 °C ... +50 °C	795.00

Accessories EDS-C



Los precios de los
accesorios solo son
válido, si se suministran
junto con un sensor láser.

Picture	Item No.	Description	Price / EUR
	500592	Starter kit accessories EDS Consisting of: - RS-232 configuration cable (500204) - Power Supply - Utility Software - Manual	88.00
	500204	RS-232 Configuration cable EDS Length: 3m, with M12 5 pin sensor connector IP65 and 9 pin D-Sub connector	49.00
	500205	Connection cable EDS Length: 5m, with M12 5 pin sensor connector IP65, other side open ends	29.00
	500213	Alignment jig Adjusting angle: +/-7° in two directions Material: stainless steel (V2A) Recommended for distances up to 50m Applicable for EDS/DLS/FLS	49.00

22. December 2009 / Subject to change without notice

Price List 2010_EDS-C_EUR_EN_V2.odt



GUEMISA (Electrónica Guerra y Miró Guemisa S.L.)
 Sta. Virgilia, 29 - local - 28033 Madrid (Spain)
 Tlfno.: (034) 91 764 21 00 Fax.: (034) 91 764 21 32
 Email.: ventas@guemisa.com Web.: www.guemisa.com



Starter kit accessories EDS

Item No. 500592



The Starter Kit accessories EDS is made for doing the configuration of the EDS regarding the measuring range and the analog output. The Kit includes all necessary components.

Content

- 1 RS232 configuration cable (500204) to connect the EDS Sensor with a PC via serial interface RS232
- 1 Power supply with worldwide application possible due to wide range input 100 to 240VAC and primary plug system.
- 1 CD-Rom with the EDS Start-Up Software
- 1 EDS manual

!!! EDS sensor must be ordered separately !!!

System requirements

- PC system software must support .NET Framework
- Serial interface RS232
- In case of USB interface on PC only, converters are available in the Market (e.g. Maxxtro USB to serial converter UC-232A)

Order information

Item No.	Description	Packaging unit
500592	Starter Kit accessories EDS Consisting of: - RS232 configuration cable (500204) - Power Supply IN: 100 ... 240 VAC, 0.6A Out: 24 VDC, 0.75 A - EDS Start-Up Software - EDS manual !!! EDS sensor must be ordered separately !!!	1 piece

12. Nov. 2009 / Subject to change without notice

500592_Starter kit accessories EDS_EN_V1.odt



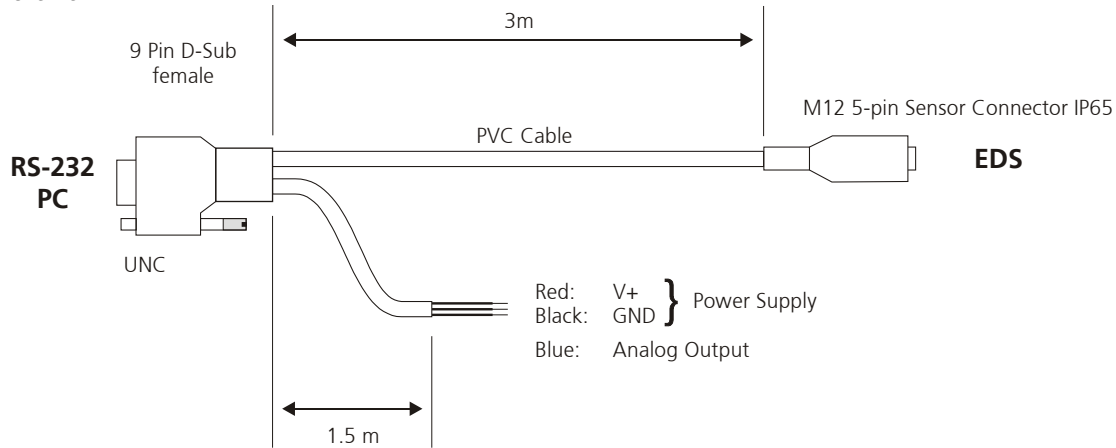
RS-232 Configuration Cable EDS

Item No. 500204

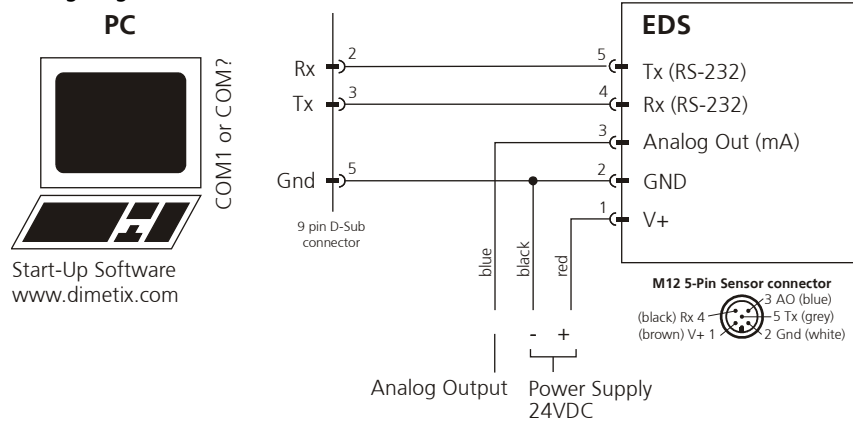


Cable for the connection of an EDS Distance Laser Sensor to a PC and a power supply (configuration cable).

Overview



Wiring diagram



Start-Up Software
www.dimetix.com

Order information

Item No.	Description	Packaging unit
500204	RS-232 Configuration cable EDS Length: 3m, with M12 5 pin sensor connector IP65 and 9 pin D-Sub connector	1 piece

12. Nov. 2009 / Subject to change without notice

500204_RS-232 Configuration cable EDS_EN_V1.odt



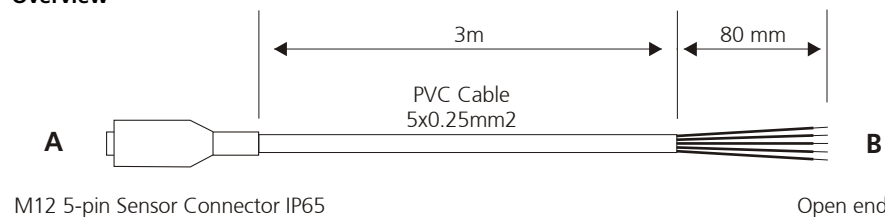
Connection Cable EDS

Item No. 500205



Cable to connect the EDS Distance Laser Sensor using the automatic mode.

Overview



Wiring diagram



Order information

Item No.	Description	Packaging unit
500205	Connection cable EDS Length: 5m, with M12 5 pin sensor connector IP65, other side open ends	1 piece

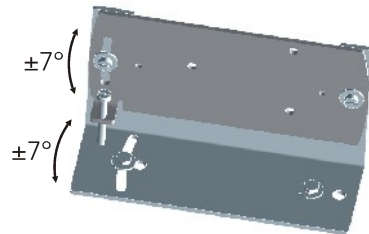
12. Nov. 2009 / Subject to change without notice

500205_Connection cable EDS_EN_V1.odt



Alignment jig

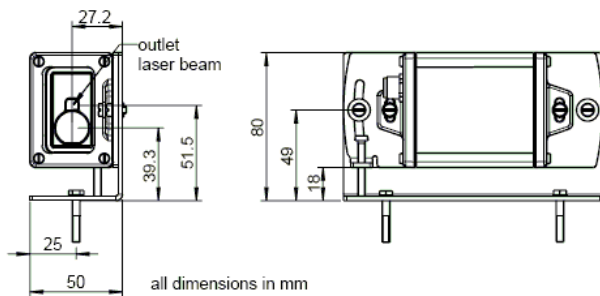
Item No. 500213



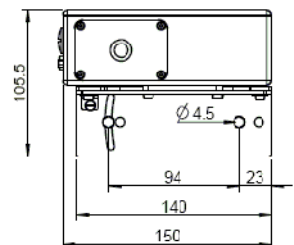
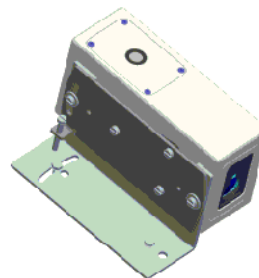
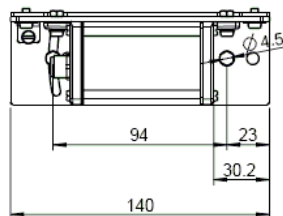
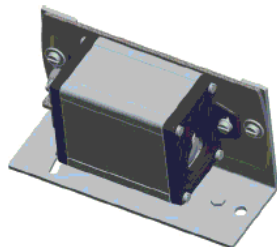
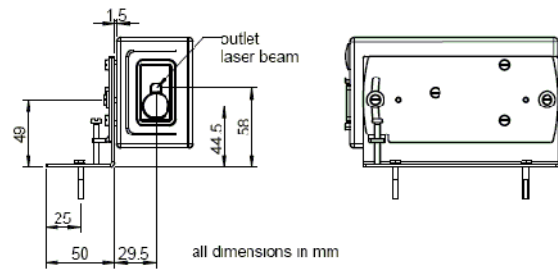
With the alignment jig it's easy to adjust the laser beam to the requested measuring target. It's made of stainless steel and can be used for any type of Laser Distance Sensor EDS, DLS or FLS.

It can be used for distances up to 50 meters.

Dimensions for the EDS



Dimensions for the DLS/FLS



Order information

Item No.	Description	Packaging unit
500213	Alignment jig Adjusting angle $\pm 7^\circ$ in two directions Material: stainless steel (V2A) Recommended for distances up to 50m Applicable for EDS/DLS/FLS	1 piece